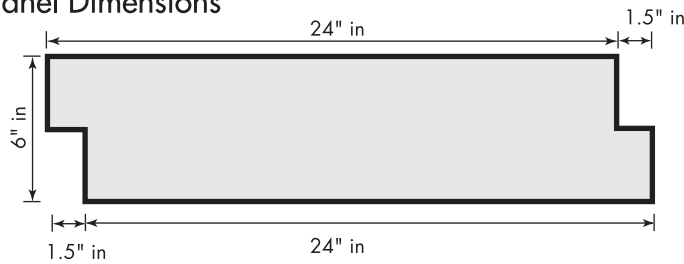


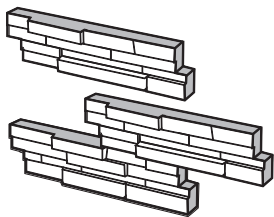
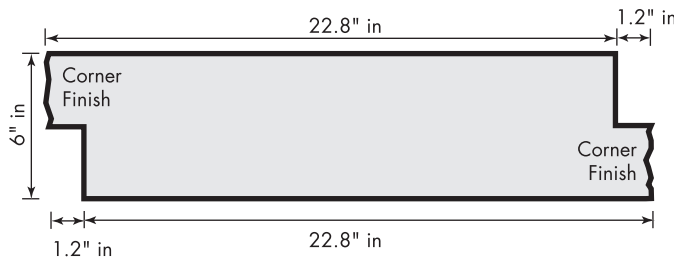
STONE VENEER PANELS CLASSIC SERIES

Product Data Sheet

Flat Panel Dimensions

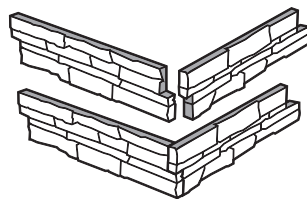


Double Corner Panel Dimensions



Flat Panel Layout

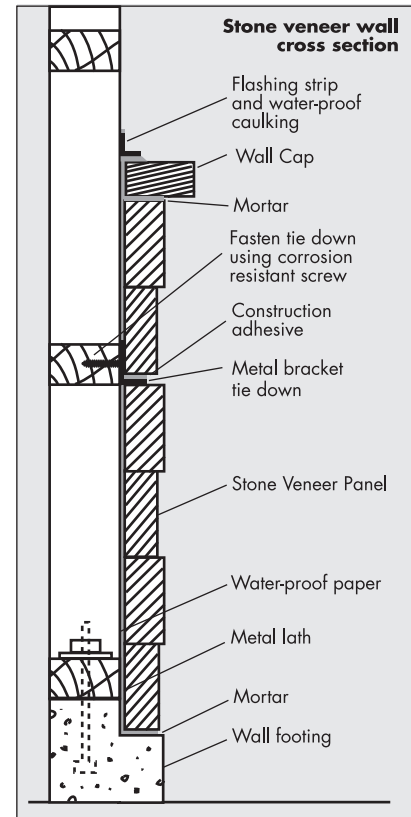
The illustration is an example of a typical arrangement of Stone Veneer Flat Panels. Conceal seams by alternating the connection of panels on each row.



Corner Panel Layout

Always start an installation at corner areas. The illustration depicts a proper assembly of Stone Veneer Corner Panels. Prefit each corner to ensure desired look. Some cutting maybe required.

Construction Diagram



Installation Guide

Standard residential construction for exterior stone veneer. Please refer to the *Stone Veneer Panel Quick Reference Installation Guide* for additional installation instructions.

Specifications

Color	Height	Length	Thickness	Material	Weight	Corner
Beach Sand	6 in	24 in	1 to 1.5 in	Sandstone	12 - 14 lb per panel	Double End Corner
Copper	6 in	24 in	1 to 1.5 in	Slate	12 - 14 lb per panel	Double End Corner
Desert Haze	6 in	24 in	1 to 1.5 in	Quartzite	12 - 14 lb per panel	Double End Corner
Jade Pearl	6 in	24 in	1 to 1.5 in	Quartzite	12 - 14 lb per panel	Double End Corner
Sage Green	6 in	24 in	1 to 1.5 in	Slate	12 - 14 lb per panel	Double End Corner
Smoke Black	6 in	24 in	1 to 1.5 in	Slate	12 - 14 lb per panel	Double End Corner